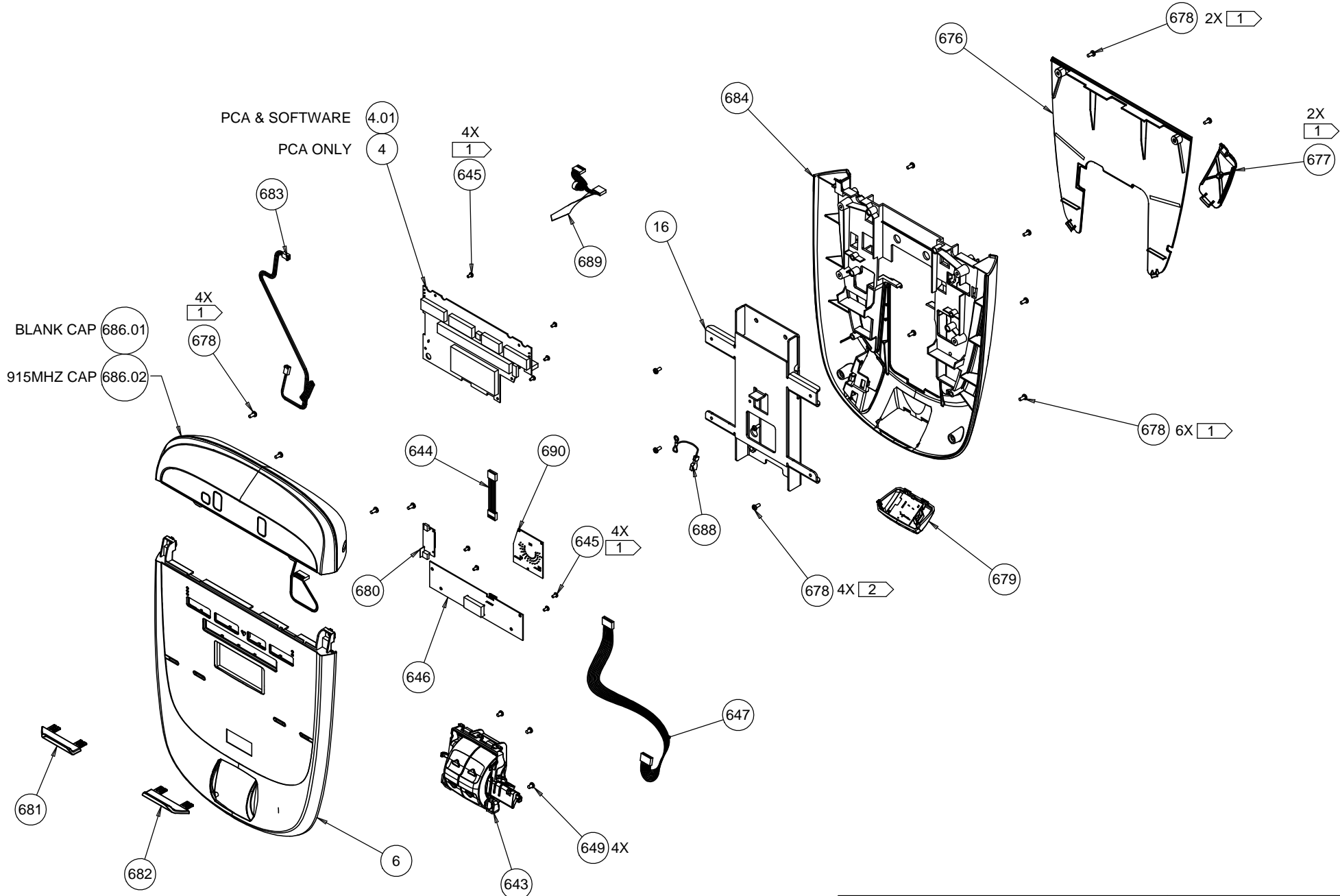


D

C

B

A



PRODUCT:						DWG. NO.		SUBREV	
P30 CONSOLE						302310-101		C	
DRWN BY	11.19.13	WDC	SIZE		PAGE	1 OF 1			
CS	10.21.13	BG	A						

DRAWING TEMPLATE REV: B

Bubble	Part Number	Description
4	300986408	PCA, DISPLAY, P30-10KEY, (V1.01 BOO
4.01	40188104	ASSY, UPPER PCA & SW, AMT 833,AMT12
6	302784150	ASSY,DISPLAY-FACE,P30,AMT10-833,EN
643	300350108	ASSY,MACHINE CONTROL,(SINGLE)
644	49800005	ASSY,CABLE, 6C,.1 CTR,1-1,TIN, W/FE
645	MGCN013025	SCREW,MCH,6-32X1/4,PANHD,PHIL,
646	301097151	ASSY,PCA & SW,DISPLAY,P30 METRICS,S
647	40011015	ASSY,CBL,8C,.1 CTR,1-1,SN,15 in.
648	300285102	WELDMENT,DISPLAY,PT - P10/P30/P20
649	PARCN013038	SCREW, PANHD, PLASTITE, TRILOBE, #6
676	300278101	PLASTIC, SERVICE COVER, DISPLAY, P2
677	300283101	PLASTIC, HR DOOR, P40/P20
678	MGCN016038	SCREW,MCH,8-32X3/8,PANHD,PHIL,
679	303733101	ASSY,USB-JACK, TOP BLANK CAP
680	300812101	BOARD, CHR & WIRELESS, SALUTRON,100
681	303176101	SUPPORT,BOOK,LEFT,P30/P10
682	303176102	SUPPORT,BOOK,RIGHT,P30/P10
683	40015020	ASSY,CBL,3C,.1 CTR,W/RAMP,1-1,SN,20
684	300277103	PLASTIC, REAR, DISPLAY ,P40/P30/P20
686.01	300205103	PRODUCT,BLANK CAP,P10/P20/P30/P40
688	301415008	CBL,1C,20AWG,#8 RING/250X032 QD REC
689	35754009	ASSY,CABLE,6C, .1 CTR,1-1,TIN,9 in.
690	300330101	ASSY, PCA & SW, LED STRIDE DIAL, DI
750	304178101	ASSY,PLASTIC,OPTION CAP,REAR
751	304177101	ASSY,PLASTIC,OPTION CAP,FRONT,BLANK
998	302403341	LITERATURE KIT, P30 (ALL), EN